

REDSKY

AT BAXTER CREEK



WITH COMPLIMENTS OF

HERE, NOTHING COMES BETWEEN YOU AND YOUR VIEW.

Located a few minutes north of Whistler above Green Lake, Red Sky is an integral part of the Baxter Creek neighbourhood. Just up the hill from the community of Rainbow, Baxter Creek is connected to a trail network that integrates seamlessly with Alpine Meadows to the west and Emerald Estates to the east.

Right outside your door, you'll discover ample opportunities for hiking, running, biking and snowshoeing.



URBAN SOPHISTICATION, ALPINE SETTING.

With its elegant, contemporary design, Red Sky is very much part of its mountainside setting. Extensive use of natural materials such as wood and stone complement the natural surroundings. Every home is oriented to take full advantage of the spectacular views with oversize windows facing the mountains.

Each mountain home features over 2000 square feet of open concept indoor living space, while large decks and ground floor patios create additional outdoor living areas. Speaking of space, every home has a two car garage and storage for bikes and sports equipment.





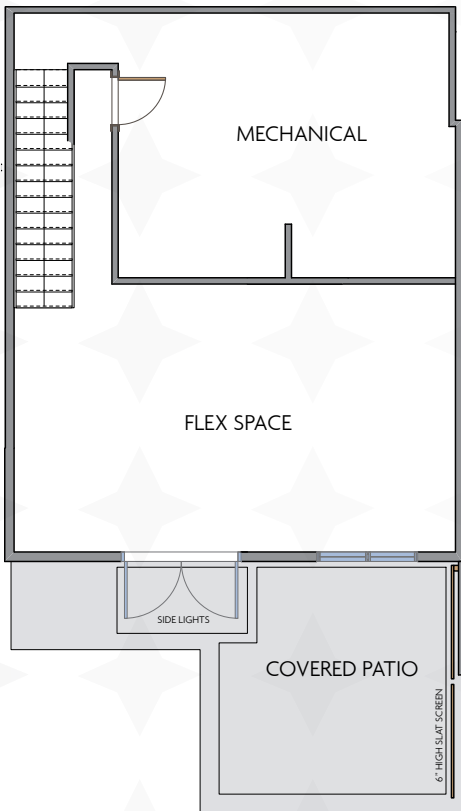




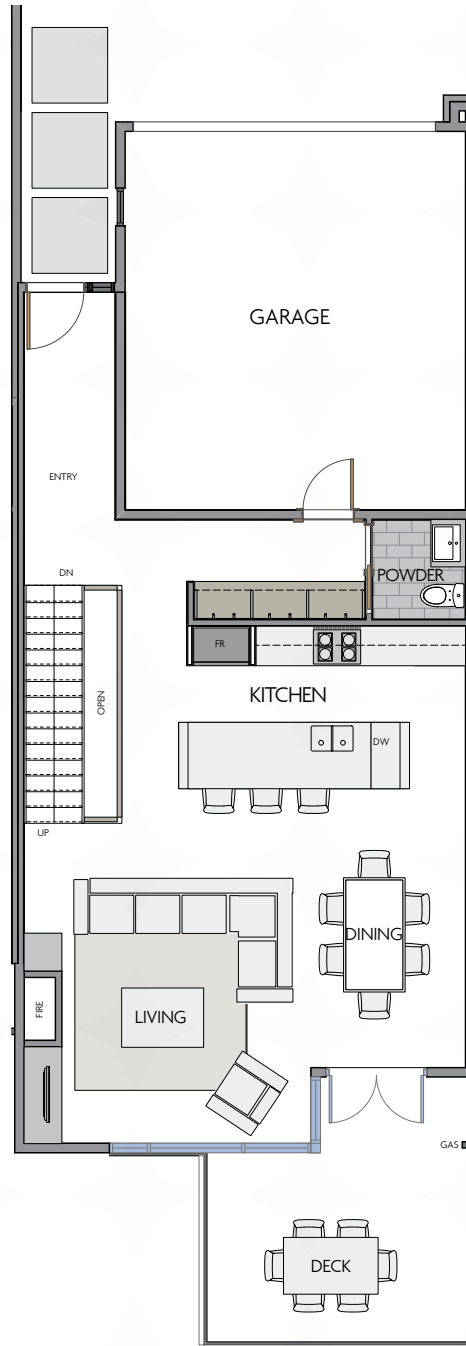


FLOOR PLAN

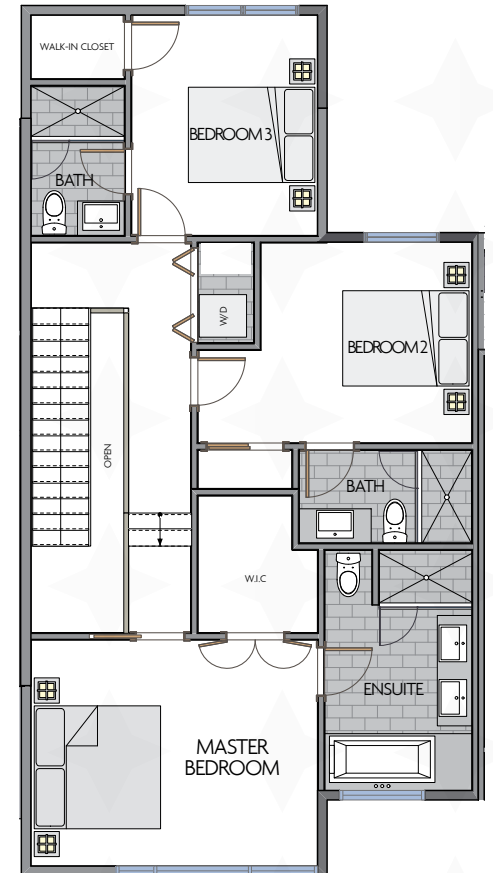
2152 SQ FT



LOWER FLOOR
420 SQ FT



MAIN FLOOR
795 SQ FT



UPPER FLOOR
937 SQ FT

GENERAL

- South facing exposure from a bench of land above the valley floor delivers sunshine from dawn to dusk
- Convenient access to network of trails connecting Alpine Meadows to the west and Emerald Estates to the east
- Contemporary mountain architecture with extensive use of natural wood and stone, designed to take full advantage of the spectacular views and natural surroundings
- Spacious mountain homes with over 2000 square feet of indoor living
- Large, energy efficient windows to maximize natural light and the panoramic views of Whistler and Blackcomb mountains
- Green Building standard
- Spacious outdoor decks and ground floor patios
- Two car garages
- Lower level unfinished and provided for Flex Space. An upgrade option will be available or choose to design and build your own space.
- Heated tile entry with premium hardwood floors in kitchen, master bedroom, dining and living areas
- Built-in millwork storage at entry from garage
- All homes pre-wired for security system and fiber optic
- Fir, shaker-style interior doors with satin chrome door hardware
- Berber, stain resistant carpeting throughout bedrooms
- Quality detailing and streamlined finishes with two designer colour schemes: Whistler *light* and Blackcomb *dark*.

LIVING AREA

- Open concept connects kitchen and dining area with vaulted ceiling in living room
- Open tread staircase with glass railing leads to upper and ground floor levels
- Mountain contemporary fireplace with large format stone surround and hearth
- Custom millwork entertainment wall unit for Audio/Visual equipment and television

KITCHEN

- Entertainment-style kitchen with large island
- Custom cabinetry with rich wood grain finish and under-cabinet lighting
- Soft-close mechanism on all cabinet doors and drawers
- Fisher & Paykel appliances including 30" gas range and wood paneled fridge
- Quartz countertops with double bowl undermount stainless steel sink
- Polished chrome Grohe kitchen faucet with retractable spray
- Recessed ceiling lighting throughout kitchen area
- In-sink disposal

BATHROOM

- Elegant custom cabinetry
- Large master bathroom tubs oriented to the mountain view
- Quartz countertops with vessel sinks and stone backsplash
- Porcelain tile flooring with in-floor heat
- In master ensuite, frameless glass shower enclosures with porcelain wall tiles
- Arci-tec dual-flush toilets
- Oversized mirror with contemporary light fixture

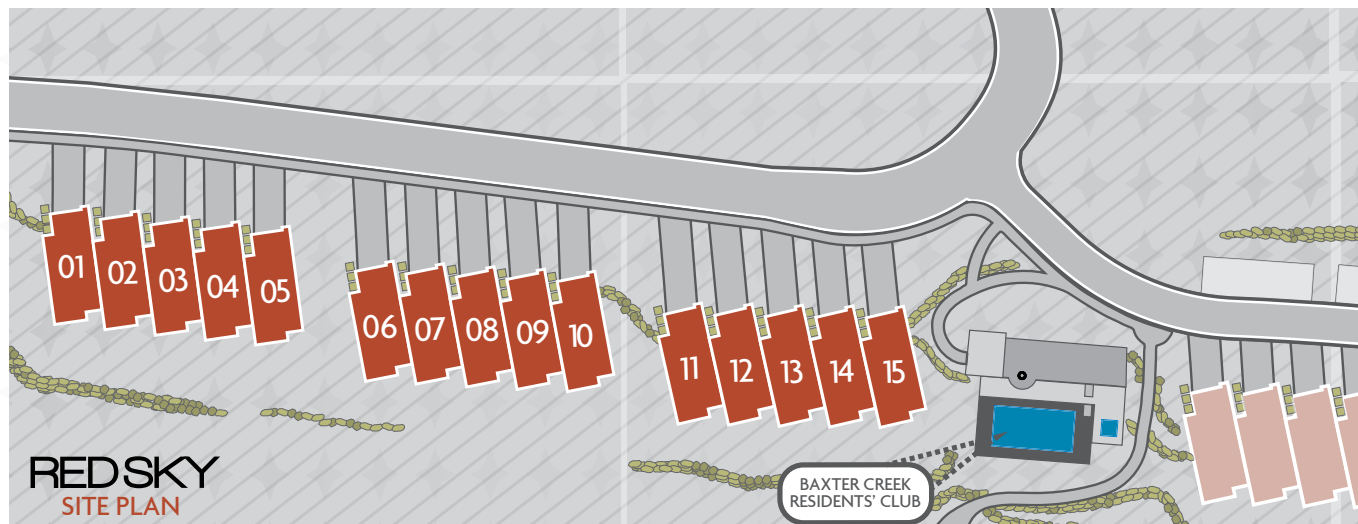
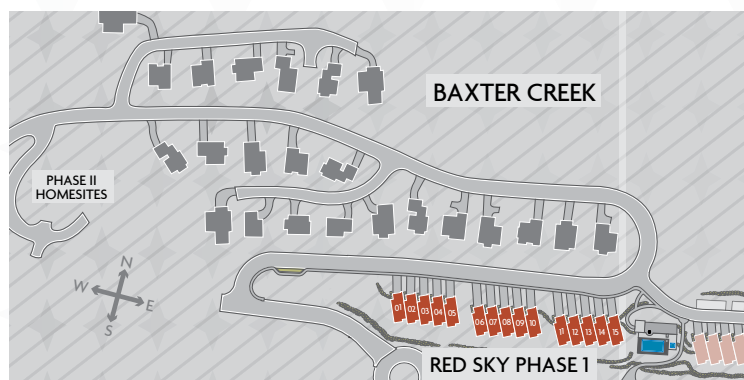
AMENITIES

- Exclusive Baxter Creek Residents' Club featuring salt water pool, hot tub, change rooms and fire pit gathering area
- Convenient access to nearby trail network for hiking and biking along with proximity to the Valley Trail

A PROVEN COMMITMENT TO QUALITY.

With over two decades of experience in Whistler, the Baxter Creek Development Team has created many developments that emphasize the connection between people and nature. The three partners live in the community and share a genuine passion for the area.

Over the years, with every development, the team has demonstrated environmental sensitivity and careful planning to preserve the natural beauty of the community. Red Sky at Baxter Creek marks a milestone in their partnership. Resulting in a stylish project in harmony with its setting.



All renderings and illustrations reflect the artist's interpretation of the project only. Subject to change. Developer reserves the right to make changes and modifications as deemed necessary.

REDSKY

AT BAXTER CREEK



www.redskywhistler.com

This is not an offering for sale. Such an offering may be made by disclosure statement only.

